

Lubricants for Gas cogeneration engines



REPSOL

Let's invent the future



INDEX

Introduction.....	4
1. Lubricants for gas cogeneration engines	5
• Repsol Super Long Life Gas 4005	5
• Repsol Long Life Gas 4005	6
• Repsol Long Life Biogas 4005	6
• Repsol Synthetic Motor Gas 404	6
• Repsol Super Motor Gas 4005	6
• Repsol Extra Gas 40.....	7
• Repsol Motor Gas HTM 40	7
2. Quality levels according to manufacturer	8
3. Packs	8
4. ADOC XXI Gas Cogeneration.....	9
• Advantages of the ADOC XXI Programme.....	9
• How to access the ADOC Gas Cogeneration Programme.....	9
• Gas Cogeneration Report.....	10
5. Commercial offices	11

Introduction

When you choose **Repsol Lubricants**, you get so much more. Because in addition to a product of the highest quality, you also get the Repsol guarantee: an integrated global energy company which carries out exploration, production, refining, distribution and marketing activities in more than 90 countries. It provides millions of people and companies all over the world with the **most efficient, responsible and innovative energy solutions**.

You also choose **maximum innovation**. Because Repsol has a **Technology Centre** at the global forefront of R&D&i, where our technicians and researchers are continuously improving each product to ensure **maximum efficiency and the highest level of technical and environmental quality**.

Maximum quality

In this sector, gas-fuelled engines are used for electricity generation and cogeneration [simultaneously generating electrical energy and useful thermal energy which is used to generate steam, hot domestic water, etc.]. The use of gases from different processes [biogas, landfill gas, purifier gas and other types of non-conventional gases] results in significant savings in the operating costs of these types of engines, as well as an environmental solution for the process.

The Repsol range of oils for gas-fuelled engines meets market needs by adapting to the demands of each type of customer according to their engine, type of gas and application. These products have been approved for use in the engines of leading manufacturers [MWM Deutz, GE Jenbacher, MAN, Rolls Royce and Cummins] and also meet the technical requirements of Wärtsilä, Caterpillar and Waukesha, among others.

Repsol markets lubricants used in other energy generation machinery, such as turbines (water, steam and gas) and diesel/petrol engines. For further information please see our catalogues at **www.repsol.com**.





1.

Lubricants for gas-fuelled cogeneration engines

REPSOL SUPER LONG LIFE GAS 4005

State-of-the-art lubricant oil designed especially for stationary gas-fuelled engines which require extremely long oil change intervals. This product is formulated using base oils which are more highly refined than conventional oils. It also incorporates innovative additive technology, giving it excellent performance, extremely high resistance to oxidation and optimum TBN retention. This means that oil change intervals can be increased more than in other products designed for similar applications.

Quality level

- CATERPILLAR
[approval in process]
- WÄRTSILÄ
[approval in process]

REPSOL LONG LIFE GAS 4005

Extremely long-lasting lubricant oil which incorporates hydrogenated base oils and state-of-the-art additives that allow oil change intervals to be increased in comparison with mineral oils. Suitable for modern stationary engines fuelled by gas which require the use of oil with a maximum ash content of 0.5%.

Its balanced formulation means that its resistance to the oxidation and nitration present in these types of engines, which operate under severe conditions, is better than that of conventional lubricants. In applications where the gas used as fuel is biogas or any other type of gas, the useful life of the lubricant will depend on the contaminant level of the gas in question.

Quality level

- JENBACHER 1000-1109 [approved]
- MWM DEUTZ [approved]
- ROLLS ROYCE BERGEN BVG/CR-G/K-G1/K-G2/K-G3 [approved]
- MAN Diesel & Turbo medium-speed engines [approved]
- CUMMINS [approved]
- MAN 3271-2
- WAUKESHA
- CATERPILLAR
- WÄRTSILÄ

REPSOL LONG LIFE BIOGAS 4005

Extremely long-lasting lubricant oil specifically developed for stationary engines which run on landfill gas, biogas and process gas (with a low methane content and a high concentration of corrosive gases). Its formula incorporates highly-refined base oils which ensure that the lubricant is long-lasting in severe operating conditions with landfill gases. The product specifications have been verified with state-of-the-art engines operating at full load.

Quality level

- JENBACHER TA 1000-1109 [approved] for type B and C gases

REPSOL SYNTHETIC MOTOR GAS 404

REPSOL SYNTHETIC MOTOR GAS 404 lubricant oil is designed to lubricate engines using special or enriched gases, where combustion may be highly sensitive to ash or deposits in valves and pistons.

Quality level

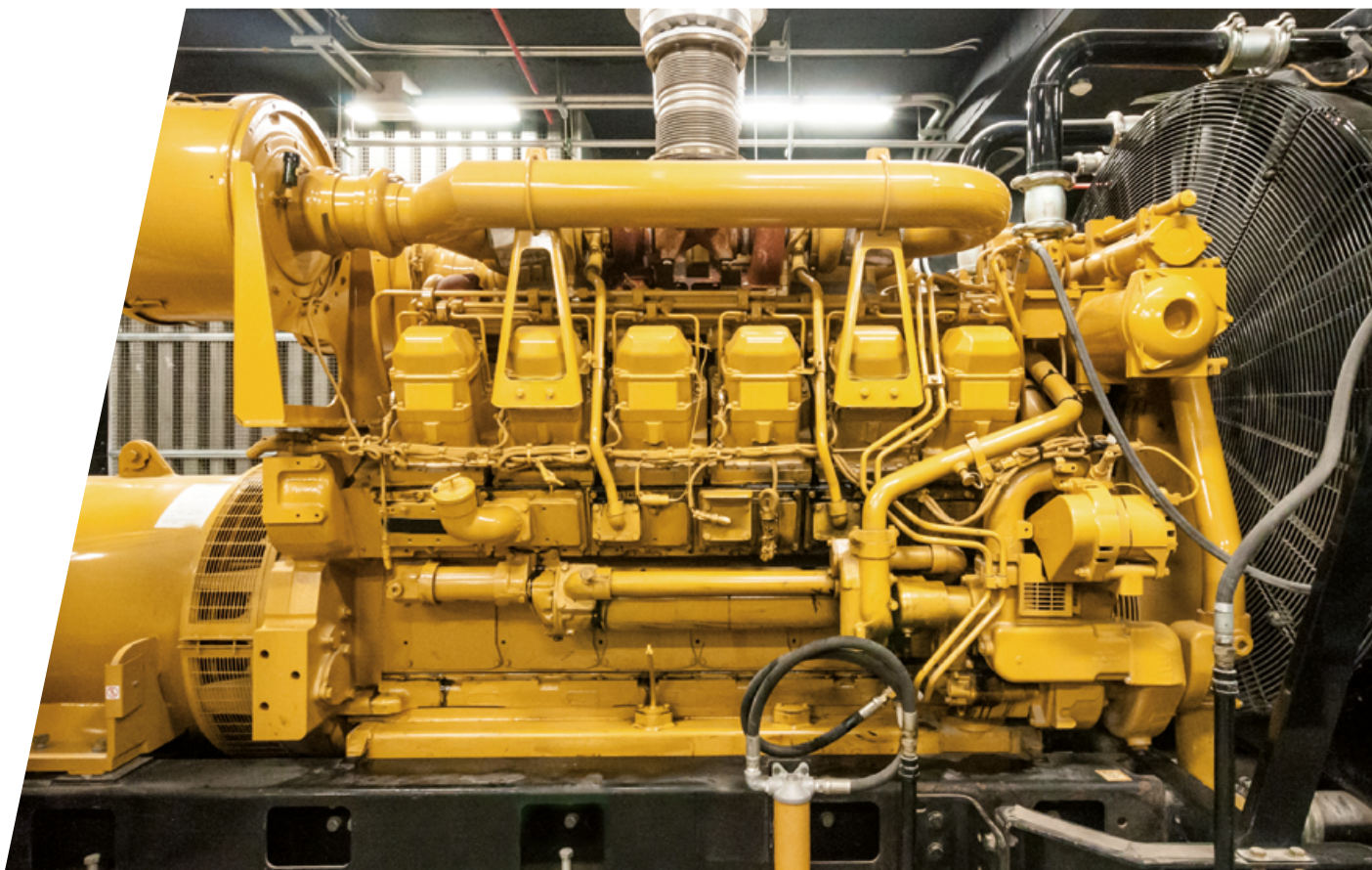
- JENBACHER 1000-1109 [approved for special gases]

REPSOL SUPER MOTOR GAS 4005

Extremely long-lasting mineral lubricant oil especially designed to meet the lubrication requirements of modern stationary engines fuelled by natural gas. Its formulation has a maximum ash content of 0.5%, minimising deposit formation and guaranteeing maximum performance and uptime. It enables longer oil change intervals, thereby minimising maintenance costs.

Quality level

- JENBACHER 1000-1109 [approved]
- MWM DEUTZ [approved]
- ROLLS ROYCE BERGEN K-G1/K-G2/K-G3
- CATERPILLAR
- WÄRTSILÄ
- WAUKESHA
- GUASCOR



REPSOL EXTRA GAS 40

Mineral lubricant oil for use in stationary gas engines with or without turbo blowers, running on natural gas or other gases with a low sulphur content. Its low ash content minimises engine deposits, whilst guaranteeing optimum protection for valves and valve seats. This reduces unscheduled stoppages and saves maintenance costs.

Quality level

- GUASCOR [approved]
- MWM DEUTZ [approved]

REPSOL MOTOR GAS HTM 40

Mineral lubricant oil for naturally aspirated and turbocharged stationary gas-fuelled engines. Suitable for a wide range of gases, such as natural gas, biogas, landfill gas, process gas and other gases with a higher sulphur content than natural gas [check with manufacturer].

It has been especially formulated for applications in which manufacturers require a product with a high alkaline reserve and medium ash content.

Quality level

- JENBACHER 1000-1109
(for engines installed up to September 2009)
- ROLLS ROYCE BERGEN K-G1/K-G2/K-G3
(for biogas)

2. Quality levels according to manufacturer

Product name	ROLLS ROYCE	JENBACHER	MWM DEUTZ	MAN	CUMMINS	GUASCOR	CATERPILLAR	WÄRTSILÄ	WAUKESHA
REPSOL SUPER LONG LIFE GAS 4005							Approval in process		
REPSOL LONG LIFE GAS 4005	Natural gas: BV-G/CR-G/K-G1/K-G2/K-G3 Biogas: K-G1/K-G2/K-G3	Class A. Natural gas: Series 2, 3, 4 and 6 NOTE: Series 2 and 3: extended oil change intervals	Natural gas and biogas	Diesel medium-speed engines in gas operation / 3271-2	QSK 60		Quality level	Quality level	Quality level
REPSOL LONG LIFE BIOGAS 4005		Class B and C							
REPSOL SYNTHETIC MOTOR GAS 404		Special gases							
REPSOL SUPER MOTOR GAS 4005	Natural gas: K-G1/K-G2/K-G3	Class A. Natural gas: Series 2, 3, 4 and 6	Natural gas and biogas		Quality level	Quality level	Quality level	Quality level	Quality level
REPSOL EXTRA GAS 40			Natural gas and biogas			Natural gas			
REPSOL MOTOR GAS HTM 40	Biogas: K-G1/K-G2/K-G3	Class A: Natural gas (*up to Sept '09) Class B and C: Biogas and landfill gas							

3. Packs

PRODUCT NAME	1000 L container	208 L drum
REPSOL SUPER LONG LIFE GAS 4005	✓	
REPSOL LONG LIFE GAS 4005	✓	✓
REPSOL LONG LIFE BIOGAS 4005	✓	✓
REPSOL SYNTHETIC MOTOR GAS 404	✓	
REPSOL SUPER MOTOR GAS 4005	✓	✓
REPSOL EXTRA GAS 40	✓	
REPSOL MOTOR GAS HTM 40	✓	✓

ADOC XXI

Gas Cogeneration

At Repsol we know how important it is to ensure that your engines work in the best possible conditions. It is therefore essential to ensure that they are **adequately lubricated**.

The **ADOC XXI programme** is an exclusive service we offer our customers, based on more than 15 years' experience in the analysis of lubricants. Through the periodic laboratory analysis of a sample of oil in service, the ADOC expert system tells you the condition and performance of your engines, whilst predicting any mechanical failures before they occur.

Advantages of the ADOC XXI programme



Improves the **performance** and **productivity** of your equipment.



Reduces **maintenance costs** and unscheduled stoppages.



Extends the **useful life of lubricants and mechanical components**, thereby minimising the associated replacement costs and the capital tied up in replacement parts.



Enables maintenance and control **activities** to be scheduled.



Leads to a significant improvement in the **optimum working conditions** of lubricants and components.

The **ADOC Gas Cogeneration programme** is designed to meet the growing demand of customers with large engines used in cogeneration which use gas as a fuel, primarily natural gas.

ADOC Gas Cogeneration **takes into account the particular characteristics of the lubricants especially designed for these engines**, as well as the type of gas used and the special maintenance plans applied to this industrial sector.

The results obtained after the analysis are eventually summarised in a personalised report for each customer.

How to access the ADOC Gas Cogeneration programme

Becoming a user of the ADOC Gas Cogeneration system is very simple. Just get in touch with our **sales network** or contact our **Customer Service Department** [901 111 999, saclubes@repsol.com].

You'll be provided with a customer code, as well as a sampling kit which will include the following:



Special 125ml containers to take samples.



Barcode labels to identify the samples.



Cards to send information on each sample.






Postage-paid envelopes to send the samples to our laboratory.

You can find out the results of the analyses carried out using the ADOC Gas Cogeneration system by post, email, or through the interactive services available at www.repsol.com.

GAS COGENERATION REPORT

Interpretation of results:

-  **Correct:** value within appropriate margins.
-  **Alert:** slight variation against normal value.
-  **Alarm:** value above acceptable level. These values are adjusted to the limits provided by engine manufacturers.

Diagnosis and recommendations

Our Technical Assistance and Development Department issues a diagnosis which details any anomalous results and sets out the possible causes of the failure. Finally, a set of recommendations on possible alternatives or actions to be adopted in each case are given. In this case, the oil may continue in service.

Wear rate



Degradation rate



Contamination rate



Personalised charts

Making it easier to monitor the results and analyse trends.

Analysis service

ADOC

Customer:

Facility:

Engine:

Mark: ROLLS ROYCE

PMAK - 80 30 40 V 12

SAMPLE DETAILS

Sample code:

OK (rev):

30960

Oil:

REPSOL LONG LIFE GAS ADOX SAE 40

Engine (rev):

30960

Date sampled:

24/12/2015

Added volume (L):

Date completed:

09/12/2015

Date received:

26/12/2015

Products in use (L):

A000

Replace at daily (L):

Correct

Alert

Alarm

DIAGNOSTICS AND RECOMMENDATIONS

The sample's readings are within the normal limits. The oil can still be used.

Report daily replacements to us as well as daily hours of operation or the total replacements since the previous sample was sent in.

Technical support:

ALCAIDE FERNANDEZ JULIAN@REPSOL.COM

RESULTS

Sample code	ACTUAL	1000000000	1000000000	1000000000	1000000000
Date sampled	24/12/2015	09/12/2015	17/12/2015	08/01/2016	25/01/2016
Engine (rev)	30960	30400	30000	28600	28800
Oil (rev)	30960	30400	30000	28600	28800
GLOBAL STATUS					
WEAR STATUS					
Iron, ppm	ACTH 0.000	12.6	11	13.8	14.2
Chromium, ppm	ACTH 0.000	0.02	0.01	0.01	0.01
Manganese, ppm	ACTH 0.000	1.09	2.08	2.25	3.16
Copper, ppm	ACTH 0.000	30	21.2	24.8	25.4
Nickel, ppm	ACTH 0.000	N/A	N/A	N/A	N/A
Lead, ppm	ACTH 0.000	1.29	1.29	1.29	1.45
Tin, ppm	ACTH 0.000	0.76	0.76	N/A	N/A
Silver, ppm	ACTH 0.000	N/A	N/A	N/A	N/A
Vanadium, ppm	ACTH 0.000	N/A	N/A	N/A	N/A
Titanium, ppm	ACTH 0.000	N/A	N/A	N/A	N/A
Hydrogen, ppm	ACTH 0.000	N/A	N/A	0.01	N/A
OK DEGRADATION STATUS					
Viscosity at 40 °C, cSt	ACTH 0.045	138.3	132.7	128.8	128.5
TBN, mg KOH/g	ACTH 0.086	3.3	3.3	3.8	3.4
TAN, mg KOH/g	ACTH 0.084	2.3	2	2.4	2.4
Oxidation, Abnorm	ACTH 0.242	11.6	12.4	16.8	18
Moisture, Abnorm	ACTH 0.242	5.7	8.2	10.4	7.8
OK CONTAMINATION STATUS					



Commercial offices

**HEADQUARTERS**

c/ Méndez Álvaro, 44
28045 Madrid, Spain
Tel.: 901 111 999

**PERU COMMERCIAL OFFICE**

Mariana Alejandra Sánchez Barredo
Av. Víctor Andrés Belaúnde 147
Edif. Real 5, Piso 3, San Isidro (Lima) Peru
Tel.: (+511) 215-6225
Mobile: (+519) 95825827
Fax: (+511) 421-8591
masanchezba@repsol.com

**ASIA-PACIFIC COMMERCIAL OFFICE**

Mariano Castro Martínez
10 Marina Boulevard, #14-01
Marina Bay Financial Centre Tower 2
Singapore 018983
Tel.: (+65) 6808 1065
mcastrom@repsol.com

**BRAZIL COMMERCIAL OFFICE**

Nuno Miguel Alvarez
Rua Leopoldo Couto de Magalhães Júnior, 758
11º andar, escritórios 111 e 112, Itaim Bibi
04542-000 São Paulo, Brazil
Tel.: (+55) 21-25597200
nalvarez@repsol.com

**PORTUGAL COMMERCIAL OFFICE**

Av. José Malhoa nº 16 B - 8º
1099-091 Lisbon, Portugal
Tel.: 213 119 000
sac.rlesa@repsol.com

**ITALY COMMERCIAL OFFICE**

Paolo Ferro
Centro Uffici San Siro
Via Caldera, 21
20153 Milano, Italy
Tel.: (+39) 02 409339.1
Mobile: (+39) 335 7001838
pferro@repsol.com

**FRANCE COMMERCIAL OFFICE**

Jean-Christophe Hastaran
6 Rue Jean Jaurès
92807 · Puteaux - France
Tel.: (+33) 1 46 96 65 23
Mobile: (+33) 6 86 83 08 22
Fax: (+33) 1 46 96 66 42
jchastaran@repsol.com





Let's invent the future

Repsol Lubricantes y Especialidades, S.A.
C/ Méndez Álvaro, 44. 28045 Madrid (Spain)
repsol.com